



# Smoothwall Record Manager

Allows schools to electronically record child safeguarding concerns including child protection issues and behaviour incidents, all in one place.

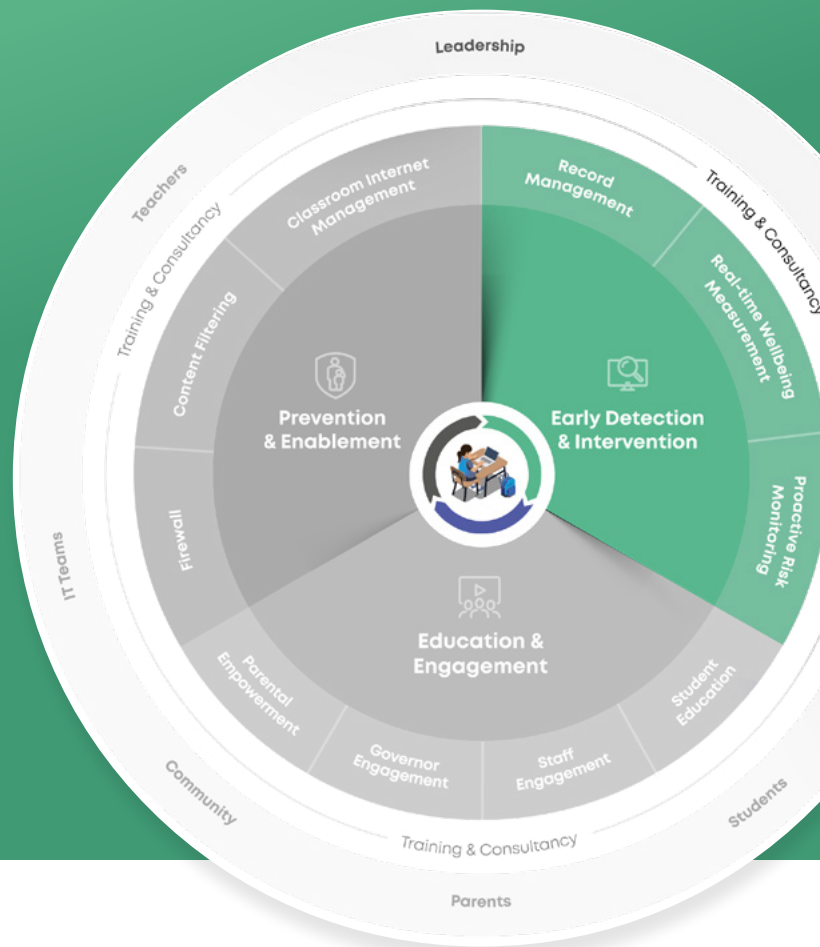


# About Smoothwall Record Manager

Now you can record child protection and safeguarding issues electronically without the need for traditional day books or CP files.

Smoothwall Record Manager is a robust and trustworthy solution which allows schools to review student wellbeing.

Exceeds regulatory requirements for record-keeping of safeguarding incidents.



## Highlights

### Student safety

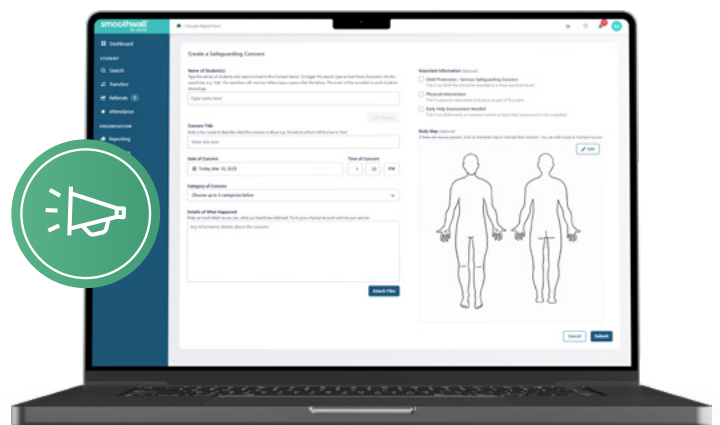
Enables designated staff to see and respond to safeguarding concerns any time and on any device.

### Helps make invisible risks, visible

Allows visibility of trends and risk patterns that may otherwise go unseen.

### Wellbeing analysis and management

Eliminates the need for traditional day books or CP files. Keeps task management dynamic and efficient.



# Smoothwall Record Manager features & benefits



## Improves student risk detection:

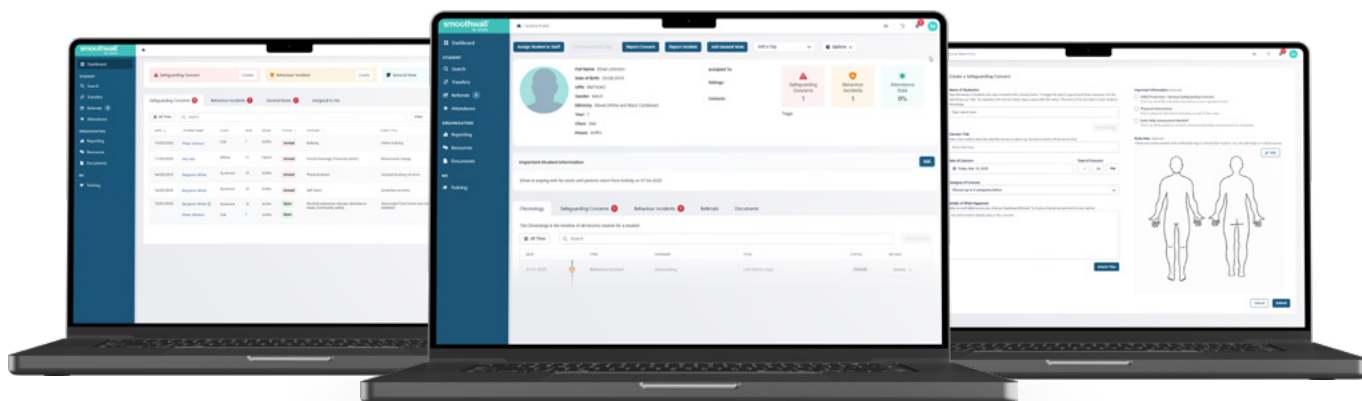
- ✓ **Raise concerns anytime, anywhere**  
Permits system access via our secure hosted option. Allows you to raise concerns anywhere you have an internet connection.
- ✓ **Timely alerts**  
Sends automatic alerts direct to designated staff members to ensure a faster response and intervention.
- ✓ **Body maps**  
Combines body maps to increase visibility of emerging patterns or trends that may otherwise go unnoticed.
- ✓ **Tags**  
Enables tagging of vulnerable groups of students for greater visibility and easier monitoring and reporting. MIS tags can also be synced for consistency across your systems.



## Holistic view of the child:

- ✓ **Chronology**  
Individual student chronologies encompass all events for the student, from behaviour and safeguarding to Monitor and Pulse alerts. Allows DSLs to record all the actions taken to effectively respond to and manage these events.
- ✓ **Integrates with Smoothwall Monitor and Smoothwall Pulse**  
Integrates seamlessly with Smoothwall Monitor and Smoothwall Pulse. Shows captured incidents on the Record Manager dashboard, allowing DSLs to view and incorporate online concerns and wellbeing information into a child's CP file.

*dedicated to keeping  
children safe*



# Smoothwall Record Manager features & benefits



## Whole school view:

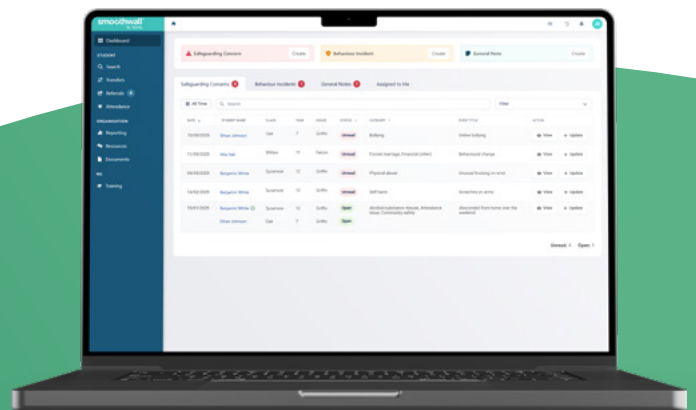
- ✓ **Centralised dashboard**  
Provides easy access to all safeguarding concerns and behaviour incidents across your school with easy switching between school dashboards. Ideal for Multi-Academy Trusts and Governors.
- ✓ **Everything in one place**  
See the number of safeguarding concerns, behaviour incidents and level of attendance alongside the chronology, tags, and important information for a complete student view.
- ✓ **Easy report creation**  
Allows reports to be created quickly and easily. See all concerns raised on a specific student in a few clicks. Simply view, export or print based on your requirements.



## Secure and safe:

- ✓ **Secure reporting**  
Record Manager has different user profiles depending on the level of information that users need to see, ensuring sensitive or restricted data remains private and secure.
- ✓ **Accurate record keeping**
  - Reports are timestamped when a form is filled out and users can also input the time and date the incident itself took place for a granular audit trail.
  - Safeguarding concern categories are updated based on the latest legislation and guidance to ensure reporting accuracy.
- ✓ **Safeguarding responsibilities training**  
Take an in-product training course on safeguarding responsibilities which is suitable for all staff, ensuring everyone stays up to date with the latest requirements.

*harnessing the power  
of connection*



# Smoothwall Record Manager's role in our Digital Safety and Wellbeing Framework



## About our Framework

Our Digital Safety and Wellbeing Framework enables school leaders to explore our solutions as they apply to the three most common pillars found in health and safety planning:

1. Prevention 2. Early detection 3. Education.

Schools can use this, supported by our Smoothwall team, to identify their priorities and plan the steps needed to achieve a more efficient and robust provision of care.

Our Framework is also a useful way for school leaders to keep abreast of the types of solutions available to them in the market. It also helps them better understand the role each of them plays and how they combine to build a digital wellbeing culture across the whole community

*none of us is as powerful as all of us*

## The role of Smoothwall Record Manager

Smoothwall Record Manager sits in the Early Detection & Intervention part of our Framework. It increases the visibility of safeguarding concerns including emerging patterns that may otherwise be overlooked.

It helps designated staff ensure timely and efficient management of cases across a school or group of schools.

# More information

---

## Get in touch

To learn more about Smoothwall Record Manager including a demo please contact our team. We are waiting to help.

T: 0800 047 8191

W: [smoothwall.com/solutions/record-manager](https://smoothwall.com/solutions/record-manager)

E: [enquiries@smoothwall.com](mailto:enquiries@smoothwall.com)

## Qoria

Smoothwall is part of Qoria, a global technology company, dedicated to keeping children safe and well in their digital lives. We harness the power of connection to close the gaps that children fall through, and to seamlessly support them on all sides - at school, at home and everywhere in between.

Find out more  
[www.qoria.com](https://www.qoria.com)



[smoothwall.com](https://smoothwall.com)

**smoothwall**<sup>®</sup>  
by Qoria